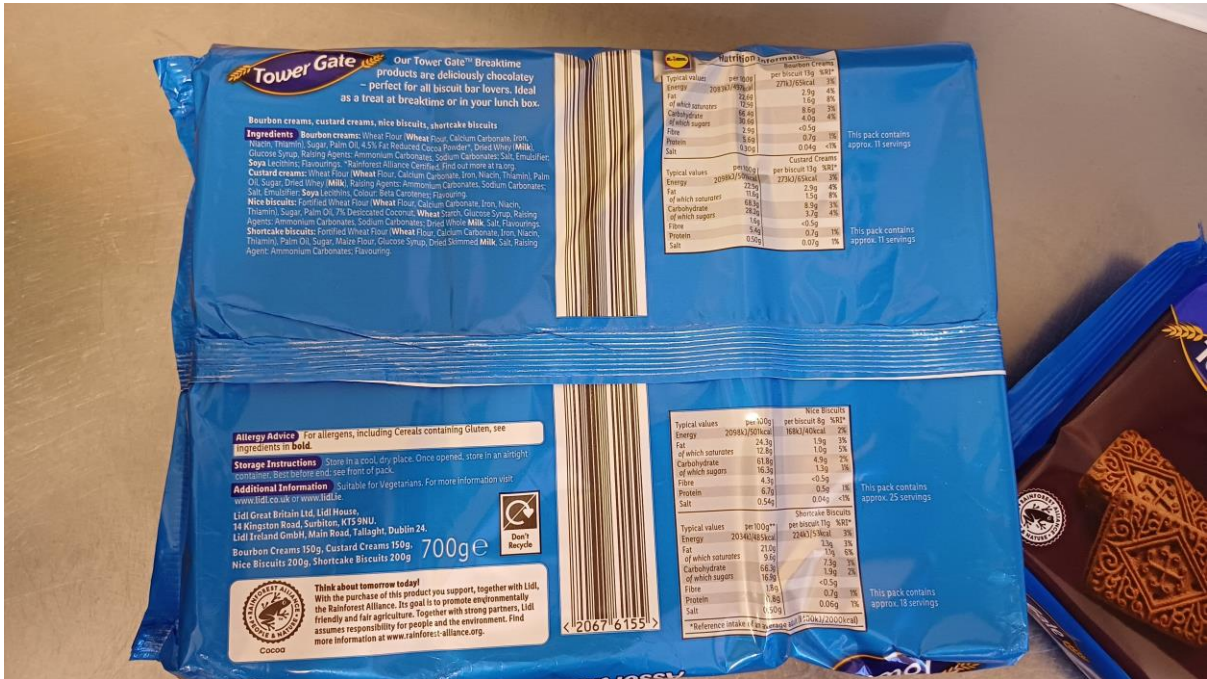
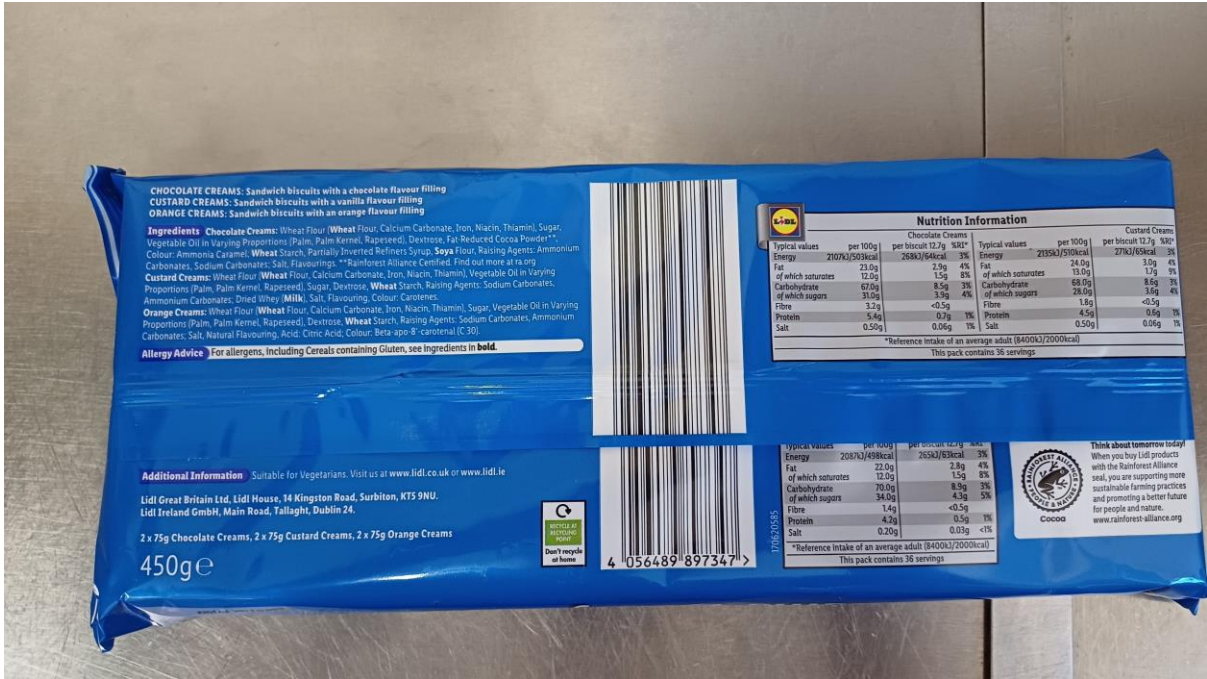




# Biscuits offered both sessions:





**CHOCOLATE CREAMS:** Sandwich biscuits with a chocolate flavour filling  
**CUSTARD CREAMS:** Sandwich biscuits with a vanilla flavour filling  
**ORANGE CREAMS:** Sandwich biscuits with an orange flavour filling

**Ingredients:** **Chocolate Creams:** Wheat Flour, Wheat Flour, Calcium Carbonate, Iron, Niacin, Thiamin, Sugar, Vegetable Oil in Varying Proportions (Palm, Palm Kernel, Rapeseed), Dextrose, Fat-Reduced Cocoa Powder\*\*, Colour: Ammonia Caramel, **Wheat Starch**, Partially Inverted Refiners Syrup, **Soya Flour**, Raising Agents: Ammonium Carbonates, Sodium Carbonates, Salt, Flavourings \*\*Rainforest Alliance Certified. Find out more at [www.rainforest-alliance.org](http://www.rainforest-alliance.org)  
**Custard Creams:** Wheat Flour, Wheat Flour, Calcium Carbonate, Iron, Niacin, Thiamin, Vegetable Oil in Varying Proportions (Palm, Palm Kernel, Rapeseed), Sugar, Dextrose, **Wheat Starch**, Raising Agents: Sodium Carbonates, Ammonium Carbonates, Dried Whey, Milk, Salt, Flavouring, Colour: Carotenes  
**Orange Creams:** Wheat Flour, Wheat Flour, Calcium Carbonate, Iron, Niacin, Thiamin, Sugar, Vegetable Oil in Varying Proportions (Palm, Palm Kernel, Rapeseed), Dextrose, **Wheat Starch**, Raising Agents: Sodium Carbonates, Ammonium Carbonates, Salt, Natural Flavouring, Acid: Citric Acid, Colour: Beta-apo 8'-carotenal (C 30)

**Allergy Advice:** For allergens, including Cereals containing Gluten, see ingredients in bold.

**Additional Information:** Suitable for Vegetarians. Visit us at [www.lidl.co.uk](http://www.lidl.co.uk) or [www.lidl.ie](http://www.lidl.ie)

Lidl Great Britain Ltd, Lidl House, 14 Kingston Road, Surbiton, KT5 9NU.  
 Lidl Ireland GmbH, Main Road, Tallaght, Dublin 24.

2 x 75g Chocolate Creams, 2 x 75g Custard Creams, 2 x 75g Orange Creams

450g e



		Chocolate Creams		Custard Creams	
		per 100g	per biscuit 12.7g	per 100g	per biscuit 12.7g
Typical values					
Energy	2107kJ/503kcal	268kJ/64cal	3%	215kJ/51kcal	27kJ/6kcal
Fat	22.0g	2.9g	4%	24.0g	3.0g
of which saturates	12.0g	1.5g	8%	13.0g	1.7g
Carbohydrate	67.0g	8.5g	3%	68.0g	8.6g
of which sugars	31.0g	3.9g	4%	28.0g	3.6g
Fibre	<0.5g	<0.5g		1.6g	<0.5g
Protein	5.4g	0.7g	1%	4.5g	0.6g
Salt	0.5g	0.06g	1%	0.50g	0.06g

\*Reference Intake of an average adult (8400kJ/2000kcal)  
 This pack contains 36 servings

		per 100g	per biscuit 12.7g	per 100g	per biscuit 12.7g
Typical values					
Energy	2087kJ/498kcal	252kJ/61kcal	3%		
Fat	22.0g	2.8g	4%		
of which saturates	12.0g	1.5g	8%		
Carbohydrate	70.0g	8.9g	3%		
of which sugars	34.0g	4.3g	5%		
Fibre	1.4g	<0.5g			
Protein	4.2g	0.5g	1%		
Salt	0.20g	0.03g	<1%		

\*Reference Intake of an average adult (8400kJ/2000kcal)  
 This pack contains 36 servings



Free from biscuit option:



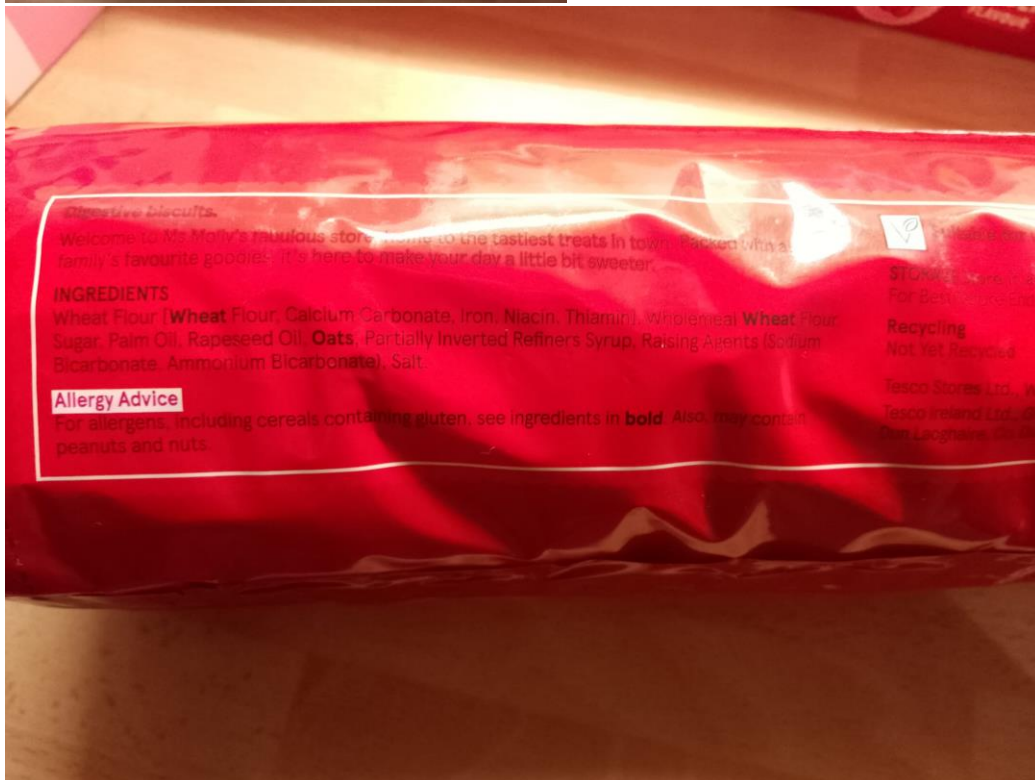
## Wednesday Easter Egg hunt ingredients:













credentialed...  
QR code to find out more!

It's our job to get this sugar to you in perfect condition. But if you're not happy with it, send it back to the Customer Services address on this pack, telling us where and when you bought it. This won't affect your statutory rights.

Store me in a cool dry place. Icing sugar can absorb flavours and odours, so store the closed pack away from strong smelling or flavoured foods.

**ICING SUGAR**  
Ingredients: Icing Sugar, Anti-Caking Agent: Tricalcium Phosphate  
Suitable for vegetarians

UK: The Silver Spoon Company, London Road, Peterborough PE7 8QJ  
EU: AB Foods Polska Sp. z o.o., ul. Przemysłowa 2, 67-100 Nowa Sól, Poland.

Nutritional Information	
Typical Values	
Energy kJ	
Energy kcal	
Fat of which	
Saturates	
Carbohydrate	
of which Sugars	
Protein	
Salt	

**ICING SUGAR**

607101  
BBE 0

FSC  
www.fsc.org  
RECYCLED  
Packaging made from recycled material

1kg

## Thursday craft free from option:

